

# TDER INDUSTRIAL

xiamen tder industrial co.,ltd.

<http://www.tder-group.cn>

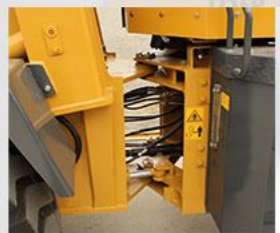
## LOADER DETAILS



Oil filter, air secondary filter,  
reduce engine cylinder liner  
wear and extend engine service life



Multiple selection of engine to meet  
different emission standard



Sensitive articulated steering



LED light, standard protection lampshade



Automatic bucket level

# TDER LOADER

## ZT925

\* The specification will be changed with the technology progress and without notice.

### LOADER PARAMETER

Model	ZT925
Rated capacity	2500kg
Operation weight	5800kg
Rated bucket capacity	1.3m <sup>3</sup>
Maximum unloading height	3600mm
Maximum unloading distance	1000mm
Overall dimension (L×W×H)	6400*2300*2950
Bucket width	2200mm
Engine	YUCHAI
Type	EFI
Number of Cylinder	4
Rated output	85KW
Torque Converter Type	Multitronic
Gearbox Model	265
Number of gear	front 4 & behind 4
Max. speed	36Km
Wheel edge reduction type	Large wheel side reduction axle
Axle distance	2700mm
wheel track	1660mm
Tire size	16/70-24
Service brake	Gas cap oil disc brake on 4 wheels
Parking brake	Hand operated caliper disc
Operating type	Mechanical single joystick
Optional operating type	Pilot control
Optional configuration	Air conditioner, rearview camera etc.
Optional attachment	Quick hitch, fork, log grapple etc.

## TDER LOADER

\* Powerful engine: Weichai engine or LIJIA SL4105ABK engine, strong power, energy conservation and environmental protection. DF-Cummins engine is optional.

\* Long wheel base design makes the loader more steady, high dumping height and short action cycling time makes the working more efficient

