

TDER INDUSTRIAL

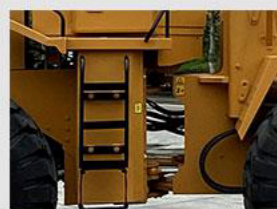
xiamen tder industrial co.,ltd.

<http://www.tder-group.cn>

LOADER DETAILS



Fully Function Panel



Sensitive Articulated Steering



Mutiple Seletion Of Engine To Meet Different Emission Standard



Comfortable Operating



Heavier Type Axle

TDER LOADER

ZT958

* The specification will be changed with the technology progress and without notice.

LOADER PARAMETER

Model	ZT958
Rated power	162KW/2200r/min
Overall dimensions	7970mmX3000mmX3540mm
Operating weight	17400KGS
Rated loading capacity	5000KGS
Bucket capacity	3m ³
Bucket width	3000mm
Wheelbase	3200mm
Tread width	2280mm
Dumping height	3400mm
Dumping reach	1200mm
Turning angle	35°±1°
Max. Climbing Gradient	28°
Turning radius	7240mm
Max. breakout force	147kN
Max. torque	745.3N.m
Lifting time	≤6.8s
Hydraulic cylinder time	≤12.55s
Specification of tire	23.5-25
Travel speed	
Forward gear I	11.5km/h
Forward gear II	38km/h
Reverse gear I	16km/h

TDER LOADER

* Steering system: The coaxes flow-amplified, hydraulic compensated steering system makes operation easy and performance reliable.

* Brake systems: Four wheel double-line caliper disc braking system with a gas container in the back to guarantee a more safety and reliable operation.

* Axle: Reinforced Q axle features larger carrying capacity and can forbid the oil leak efficiently, high reliability and convenient to maintenance.



▲ ZT958